



Quantel Digital Intermediate products provide full support for all the advanced operating modes found in HDCAM-SR™ VTRs. The iQ on-line finishing system, the Pablo color correction system and Sid, the Stereoscopic 3D finishing system all share the same features to support streamlined workflows with HDCAM-SR. Real-time dual-link input and output is standard and all the systems store and process non-compressed signals for the highest possible quality. Double speed ingest delivers the quickest possible conforms. Support for 1080/60p and 1080/50p ensures that whatever the format Quantel owners can handle it and in real time. Stereo3D is a massive opportunity for everyone and the HDCAM-SR/Quantel combination delivers a high quality real-time Stereo3D workflow.



**iQ 2K, iQ 4K, Pablo 2K, Pablo 4K, Sid V4.0 or later system software.
Stereo 3D ingest requires Stereo3D option on iQ and Pablo**

Supported Workflow

**Double-speed transfer
Stereoscopic 3D
1080/50p and 1080/60p**

Applicable HDCAM-SR VTR

**SRW-5800 with HKSR-5803HQ
SRW-5100 with HKSR-5103**

To capture material recorded at double-speed:

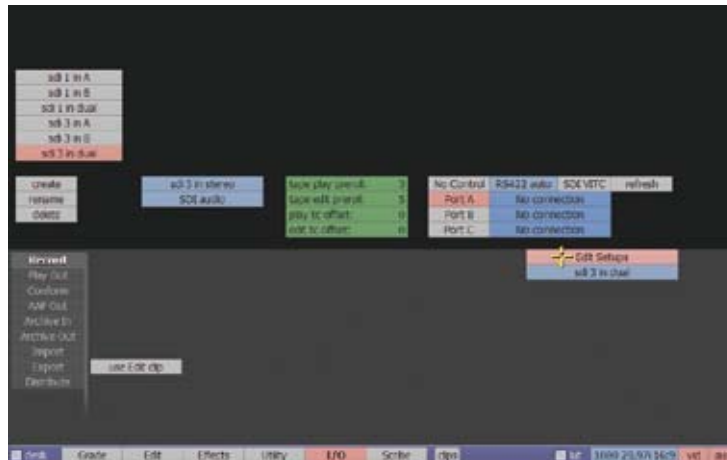
1. Ensure that the HDCAM-SR VTR is connected to the iQ/Pablo using a dual-link.
2. Set the HDCAM-SR VTR to 422DBL.
3. From the I/O menu box, select the Edit Setups and make sure the correct HDCAM-SR VTR Dual port is selected.
4. From the input format box, select 'dual x2'.
5. Capture the clip.

To capture material recorded at 1080/60p or 1080/50p:

1. Ensure that the HDCAM-SR VTR is connected to the iQ/Pablo using a dual-link.
2. Set the HDCAM-SR VTR to 1080P mode.
3. From the I/O menu box, select the Edit Setups and make sure the correct HDCAM-SR VTR Dual port is selected.
4. From the input format box, select 'dual P'.
5. Capture the clip.

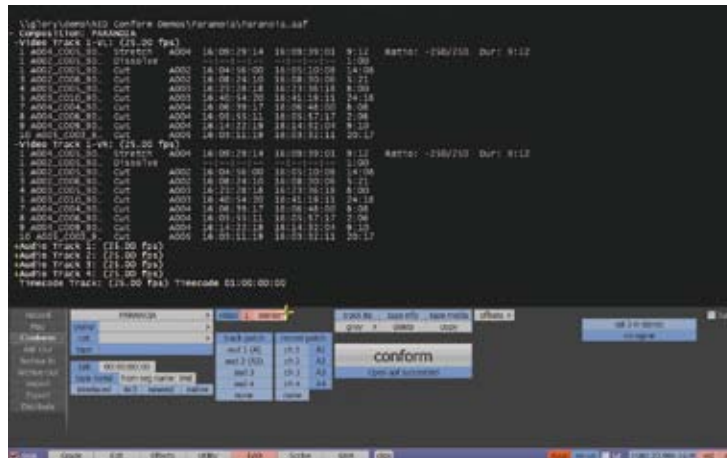
To capture material recorded in Stereo 3D:

1. Ensure that the HDCAM-SR VTR is connected to the iQ/Pablo using a dual-link.
2. Set the HDCAM-SR VTR to 422x2.
3. From the I/O menu box, select the Edit Setups and make sure the correct HDCAM-SR VTR Dual port is selected.
4. From the input format box, select 'stereo'.
5. Capture the clip.



Menu Overview for Edit Setup

All of the above formats can also be conformed at the appropriate frame rates on the iQ or Pablo by selecting the correct input format as above. This includes conforming via the Stereo input providing the user with a final stereo conformed clip. To conform a stereo edit 'stereo' has to be selected in the 'Track List' view.



Refer to the below link to see live web demos:

<http://www.quantel.com/gallery.php?id=ea49443c7c2d7a8b10d0112bedd198b2&pl=0>

Contact

Quantel

Phone +44 (0) 1635 48222
Fax +44 (0) 1635 31776
Website www.quantel.com
e-mail marketing@quantel.com